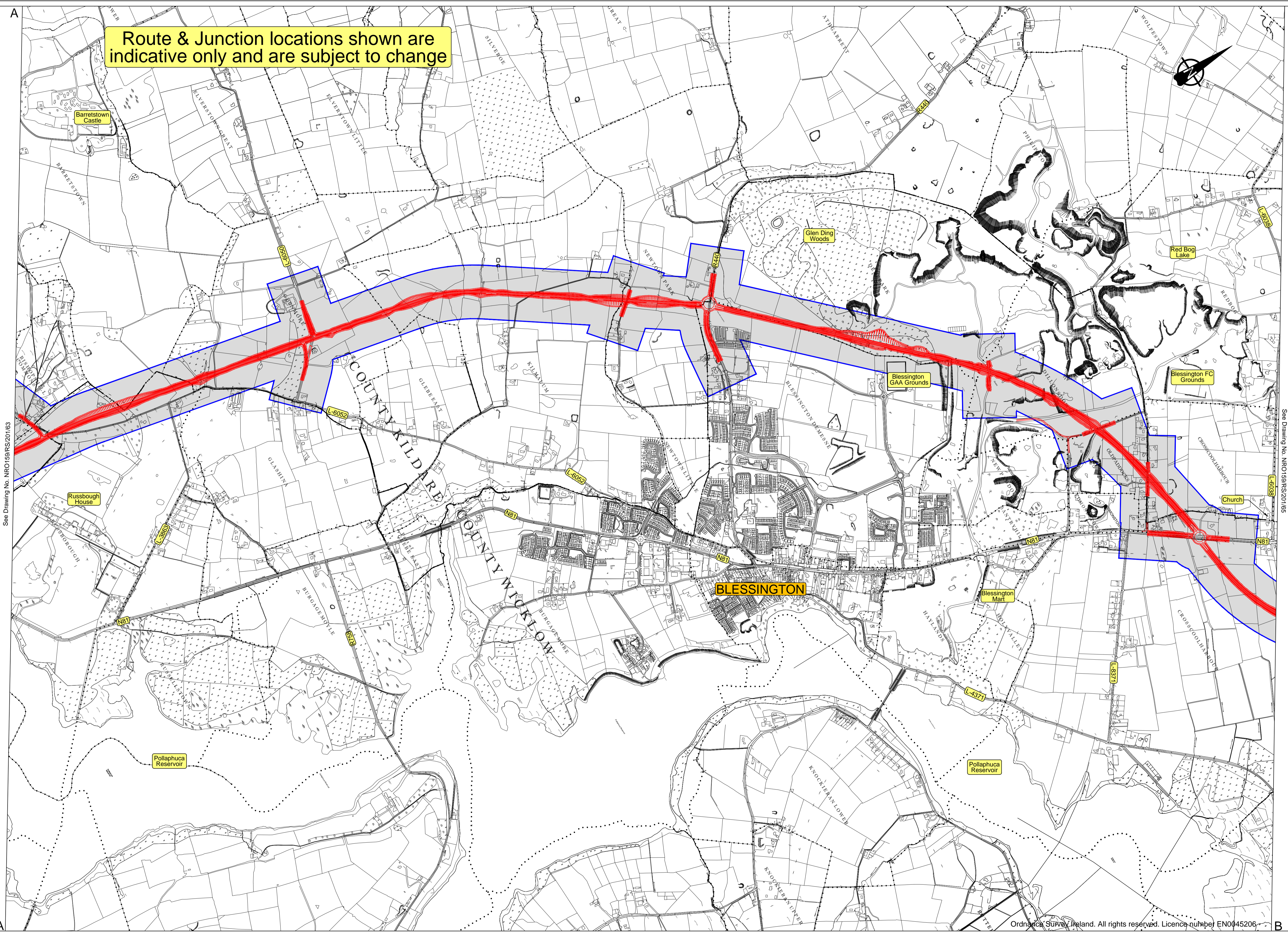


Route & Junction locations shown are indicative only and are subject to change



See Drawing No. NRO159/RS/2011/63

See Drawing No. NRO159/RS/2011/65

Ordnance Survey Ireland. All rights reserved. Licence number EN0045206

Plan

Legend:

Emerging Preferred Route

Kildare
County Council



National Roads Design Office
Maullins, Naas, Co. Kildare, Ireland
Tel: +353-45-898199, Fax: +353-45-875845, e-mail: kcc@kildarendo.com

SONYA KAVANAGH
ACTING DIRECTOR OF SERVICES
Transportation & Public Safety

DAVID O' GRADY BE MSc HDip CEng MIEI
ACTING SENIOR ENGINEER

Suffix	Initials	Date	Description
1		Oct. '11	Initial Issue
REVISIONS			

STAGE

PRELIMINARY

N.R.A. APPROVAL

TENDER

CONTRACT

PROJECT N81Hollywood Cross to Tallaght Road Improvement Scheme

DRAWING Public Consultation Emerging Preferred Route

SHEET 2 - 4

Filename: N:\Projects\NRO159\Drawing\ 200RS201 Dwg No. NRO159/RS/2011/64

Scale: 1:10,000 @ A1

Date: Oct. 2011

Drawn by: B.K.

Checked: *[Signature]*

Revision